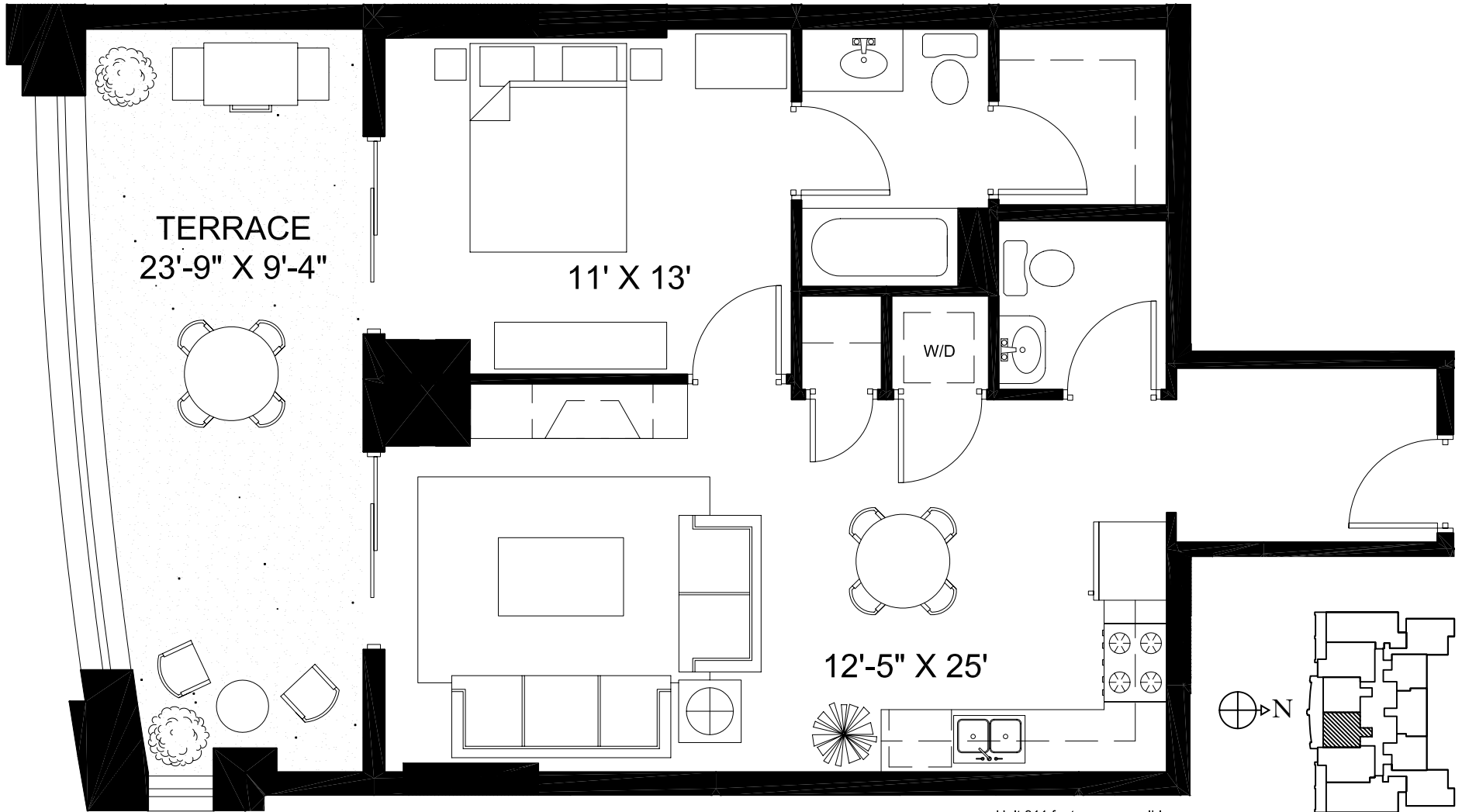


TYPICAL UNITS 511-911



Unit 911 features accessible
cabinetry in kitchen.

www.parkvieweast.com

updated: 0707.04

Developer reserves right to change floor plans to accommodate structural and mechanical elements. Priced subject to change without notice. Plans are artist's renderings. Dimensions are approximate and should not be used as precise measurements in establishing value. All dimensions are subject to change.

for a private
presentation
please call:

SCOTT GRADEN: 312.475.7757

JIM LUBY: 312.475.7777

Park View East
828 WEST GRACE

SEDGWICK
PROPERTIES
Development Corporation

Koenig & Strey GMAC
Real Estate

