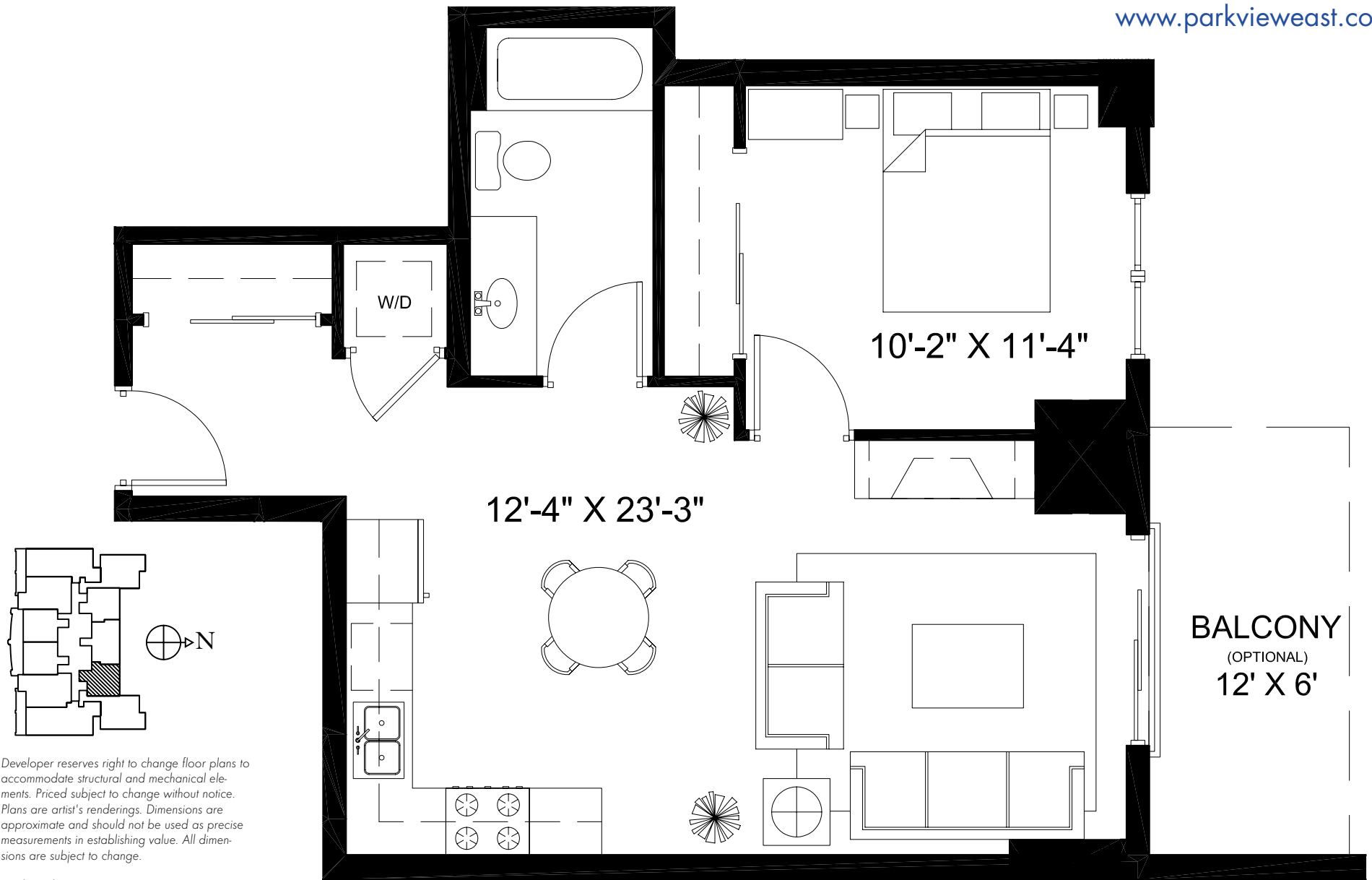


TYPICAL UNITS 507-1707

www.parkvieweast.com



Developer reserves right to change floor plans to accommodate structural and mechanical elements. Priced subject to change without notice. Plans are artist's renderings. Dimensions are approximate and should not be used as precise measurements in establishing value. All dimensions are subject to change.

updated: 07.07.04

for a private
presentation
please call:

SCOTT GRADEN: 312.475.7757

JIM LUBY: 312.475.7777

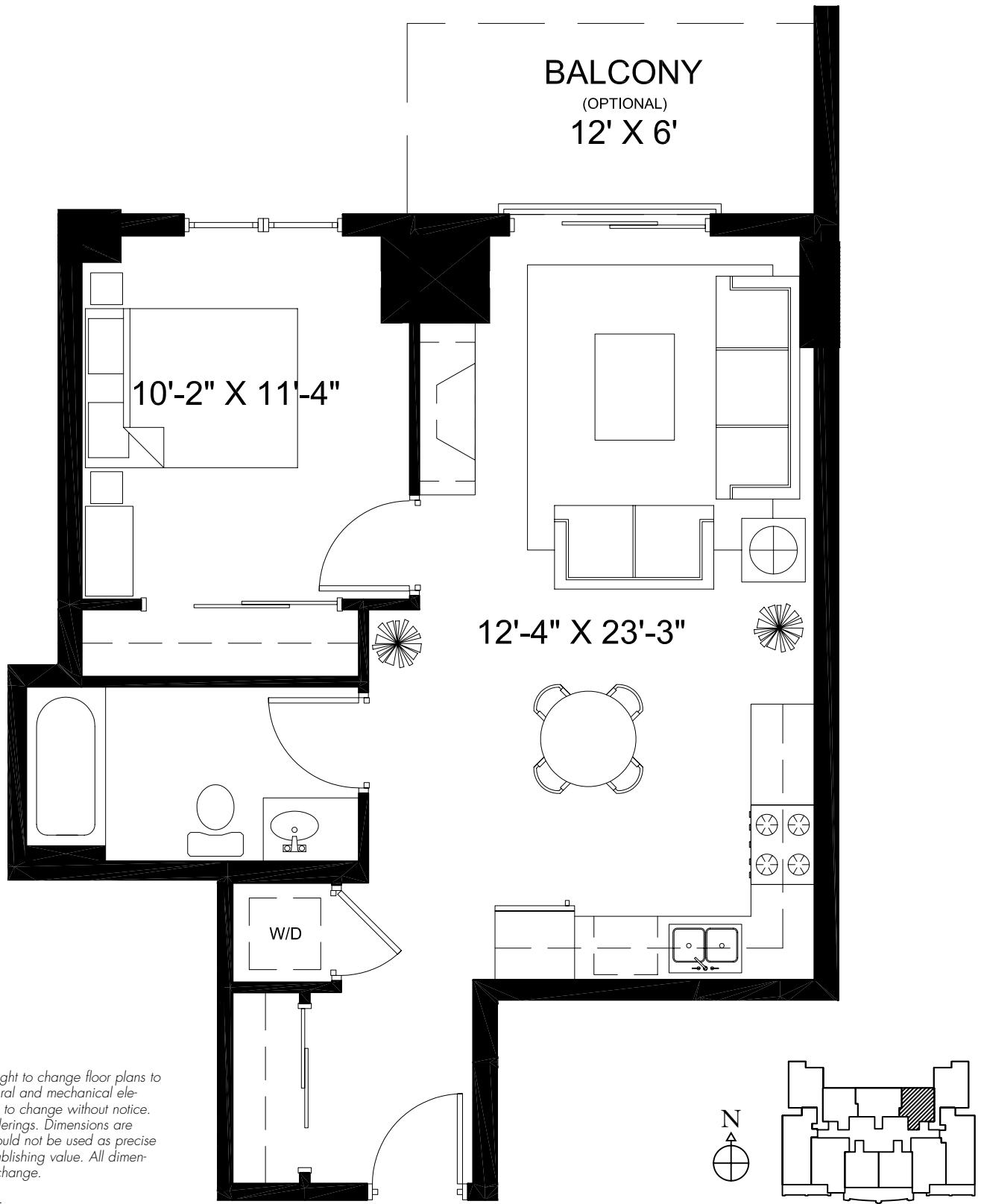
Park View East
828 WEST GRACE

SEDGWICK
PROPERTIES
Development Corporation

Koenig & Strey
Real Estate



ADA UNITS 607-1607



Developer reserves right to change floor plans to accommodate structural and mechanical elements. Priced subject to change without notice. Plans are artist's renderings. Dimensions are approximate and should not be used as precise measurements in establishing value. All dimensions are subject to change.

updated: 07.07.04

SCOTT GRADEN: 312.475.7757 JIM LUBY: 312.475.7777

Park View East

SEDGWICK
PROPERTIES
Development Corporation

Koenig & Strey **GMAC**
Real Estate

828 WEST GRACE
www.parkvieweast.com