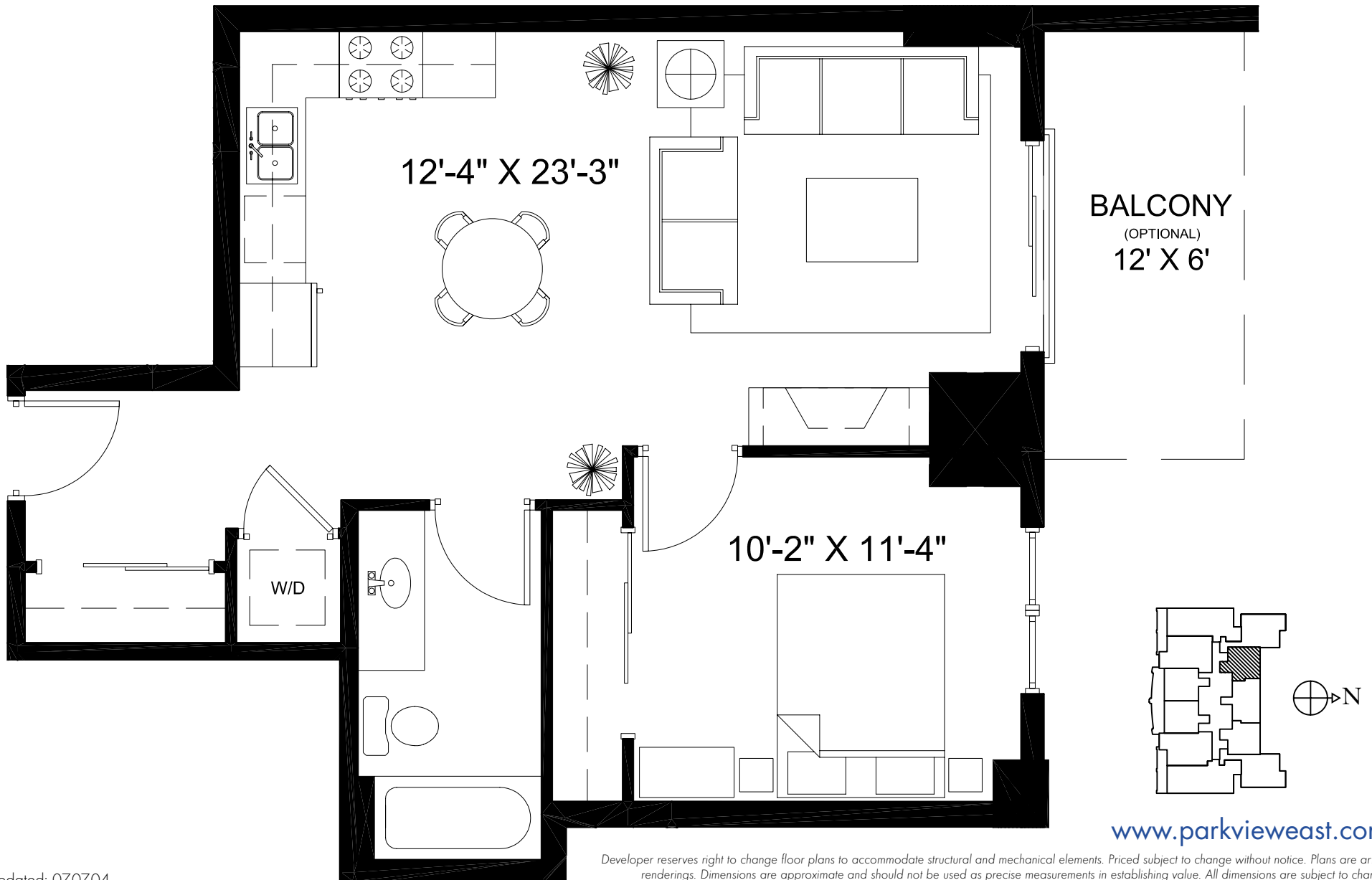


TYPICAL UNITS 505-1705



updated: 0707.04

for a private
presentation
please call:

SCOTT GRADEN: 312.475.7757

JIM LUBY: 312.475.7777

Park View East
828 WEST GRACE

SEDGWICK
PROPERTIES
Development Corporation

Koenig & Strey **GMAC**
Real Estate

