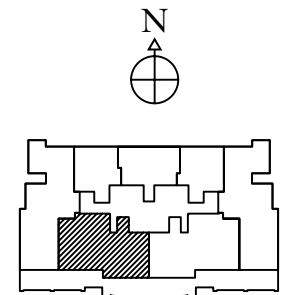
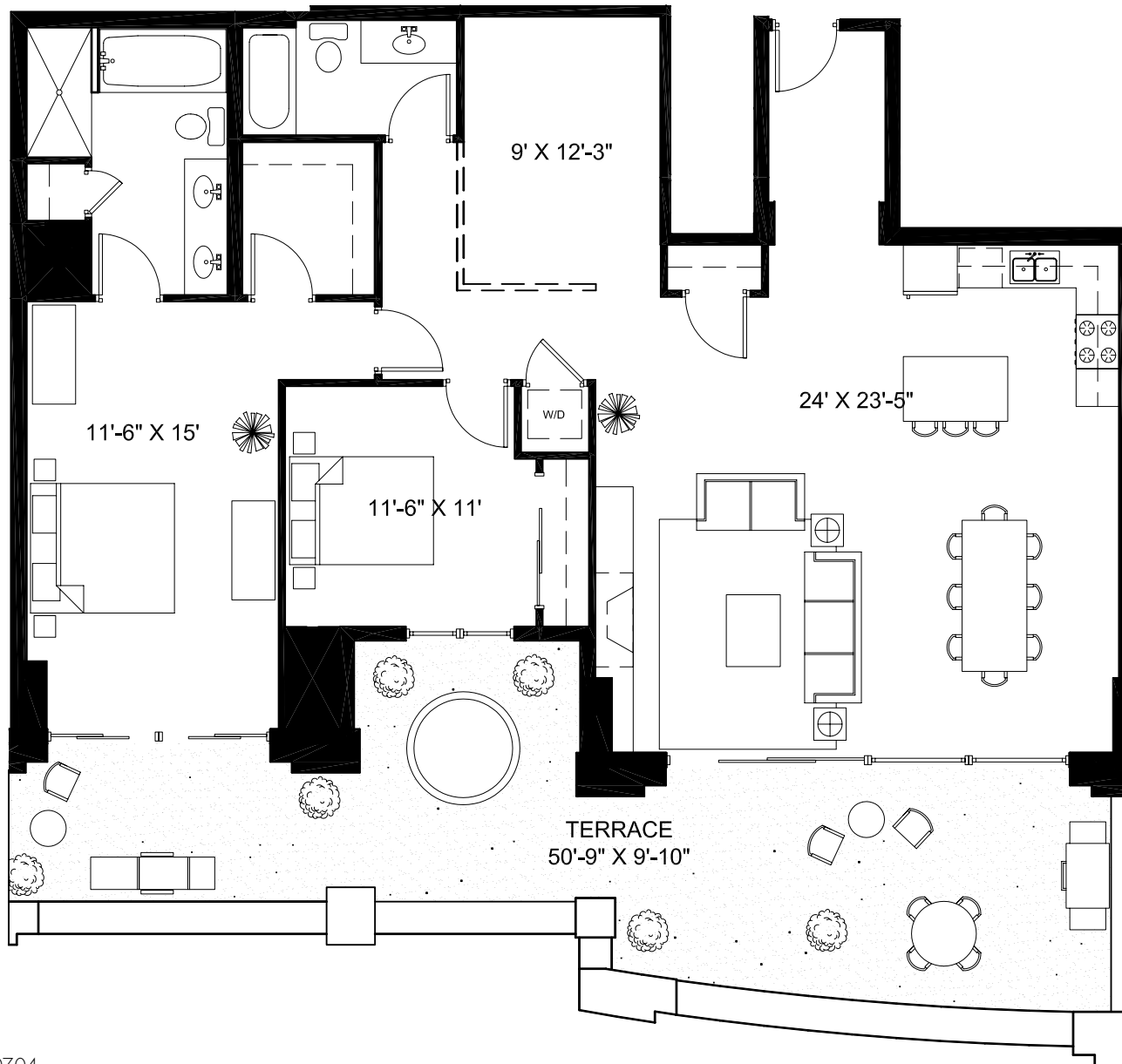


PENTHOUSE UNIT 1601



www.parkvieweast.com

Developer reserves right to change floor plans to accommodate structural and mechanical elements. Priced subject to change without notice. Plans are artist's renderings. Dimensions are approximate and should not be used as precise measurements in establishing value. All dimensions are subject to change.

updated: 0707.04

for a private
presentation
please call:

SCOTT GRADEN: 312.475.7757

JIM LUBY: 312.475.7777

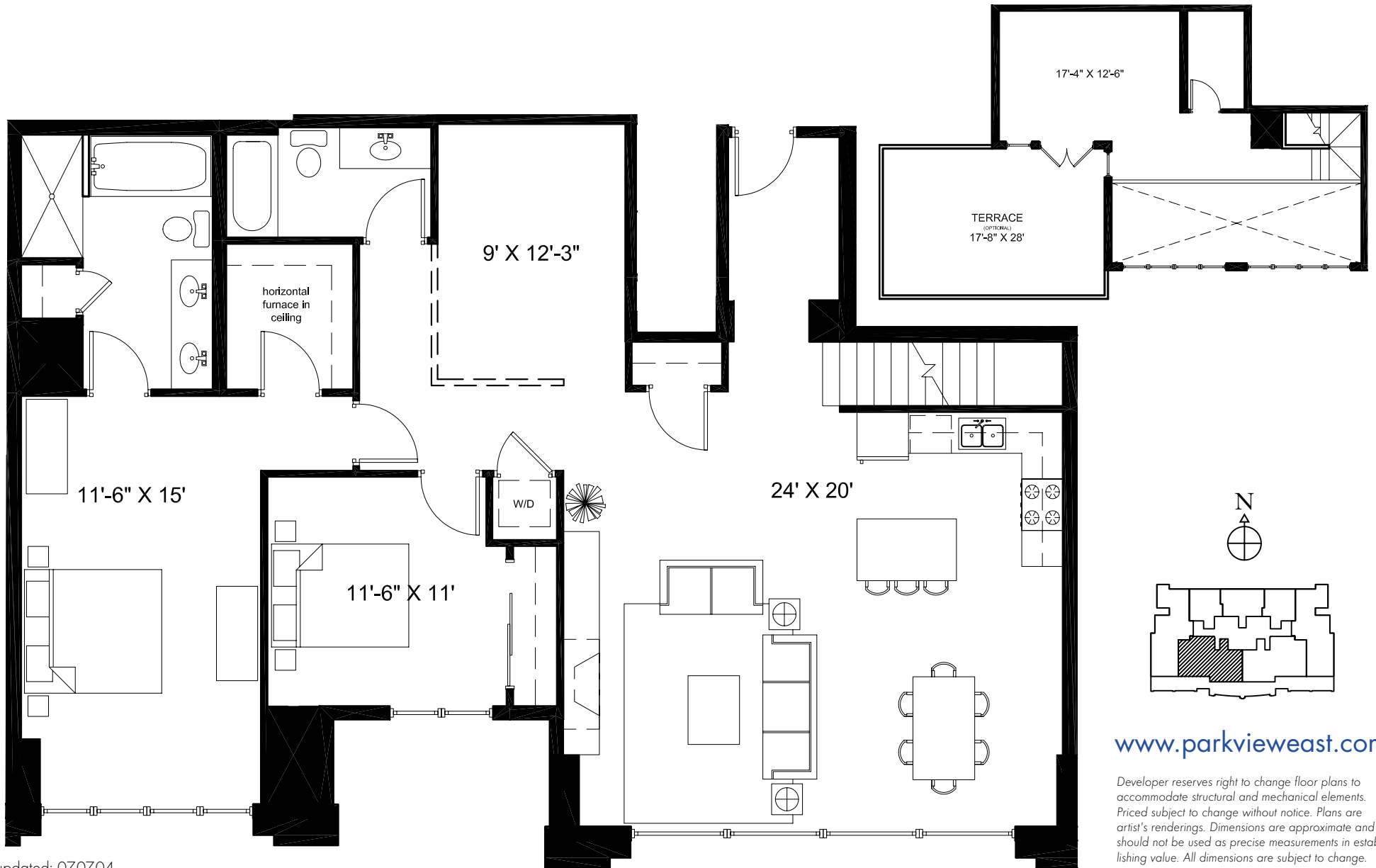
Park View East
828 WEST GRACE

SEDGWICK
PROPERTIES
Development Corporation

Koenig & Strey **GMAC**
Real Estate



PENTHOUSE UNIT 1701



updated: 0707.04

www.parkvieweast.com

Developer reserves right to change floor plans to accommodate structural and mechanical elements. Priced subject to change without notice. Plans are artist's renderings. Dimensions are approximate and should not be used as precise measurements in establishing value. All dimensions are subject to change.

for a private presentation please call:

SCOTT GRADEN: 312.475.7757
JIM LUBY: 312.475.7777

Park View East
 828 WEST GRACE

SEDGWICK
 PROPERTIES
 Development Corporation

Koenig & Strey Real Estate

